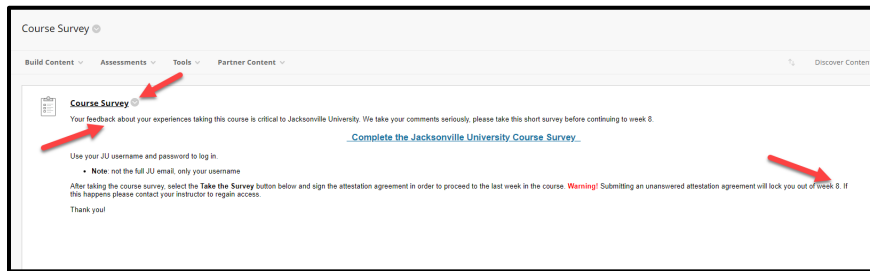
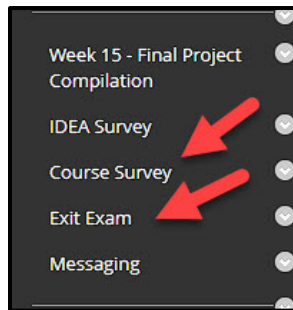




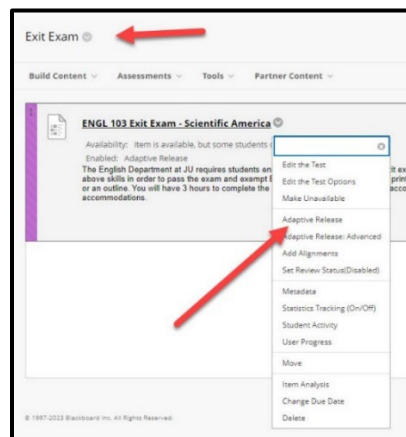
SETTING UP A SURVEY WITH AN ADAPTIVE RELEASE TO GRADED CONTENT

When it comes to collecting course data from students it becomes sometimes necessary to lock out content until a survey/assignment has been completed by the student. The most common type of survey that can be linked is a **Course Survey**, which is built like a test but is not usually added to the grade book as a graded assignment. Some instructors add an overall point value to entice the student to take a survey when data collection is necessary. Both surveys, assignments, and assessment components work the same way when setting up an **Adaptive Release** to restrict access.



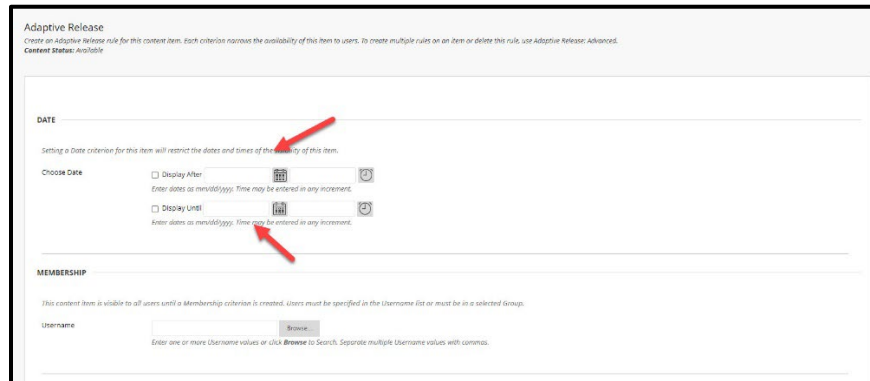
A **Course Survey** is structured like a test/quiz and displays the clipboard icon and should have an attestation clause the student must agree with to continue. The attestation clause acts as a graded component but displays in a grade book column as a green check upon completion.

Once the survey has been built, applying an **Adaptive Release** requires only a few steps. In my example, the **Exit Exam** will not be available until the **Course Survey** is complete. The first step to setting the **Adaptive Release** is to click on the down arrow to the right of the **Assessment/Assignment** you are releasing once the survey has been completed.

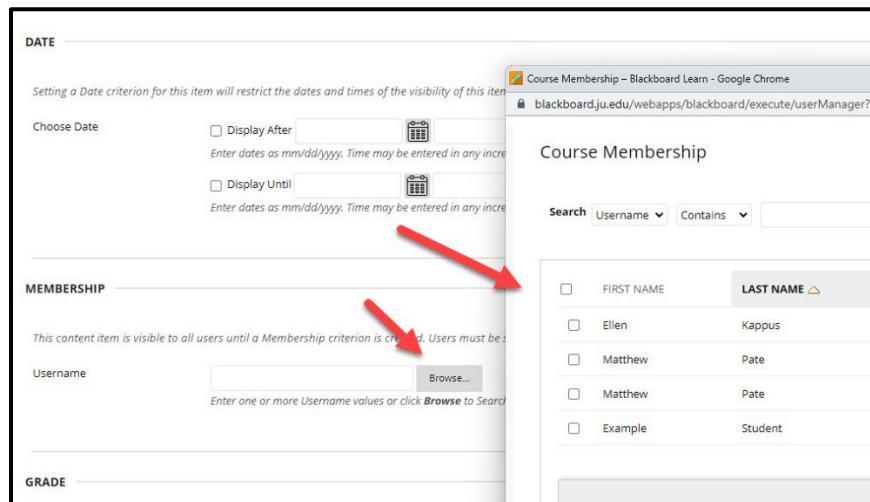




Now that you have selected the **Adaptive Release** choice, you will need to familiarize yourself with the criteria sections.

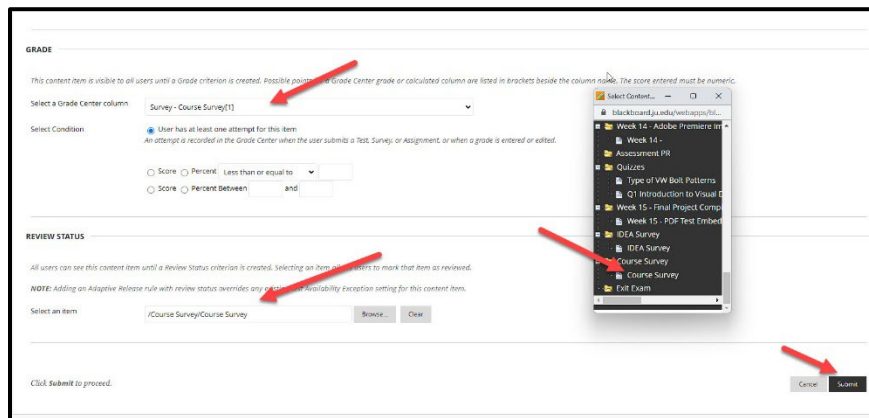
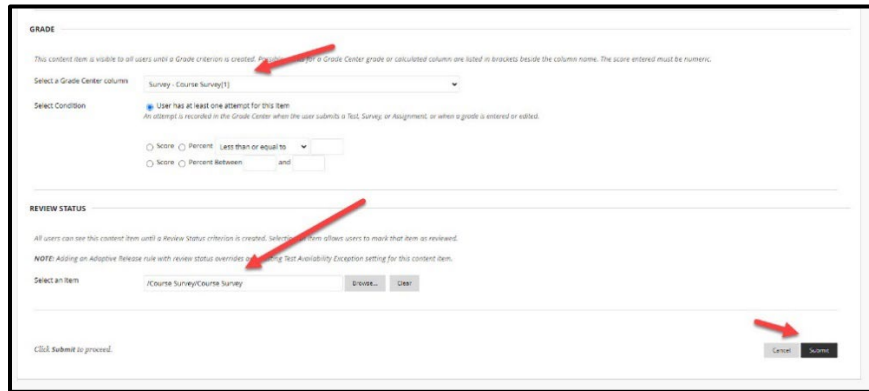


The **Display After** and **Until** sets the date parameters for completion. This is not usually applied since the release is dependent on the completion of the survey which is only available during certain weeks of the course. Membership is not needed since you are not isolating this for a set of students. If you needed to release the exam to a select few, you would then need to select specific students in the membership area after selecting **Browse**. This will populate a roster of enrolled students to choose from.

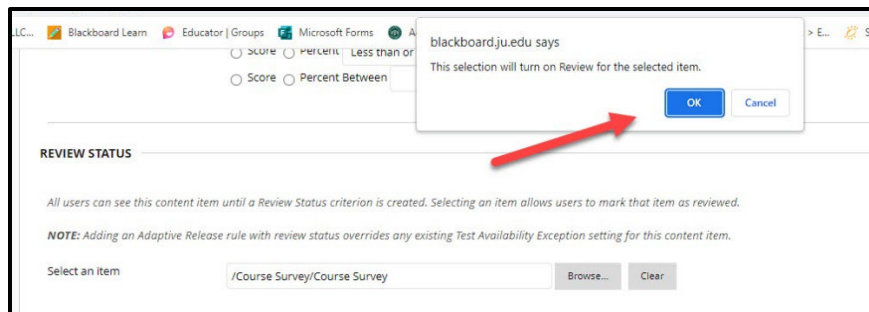




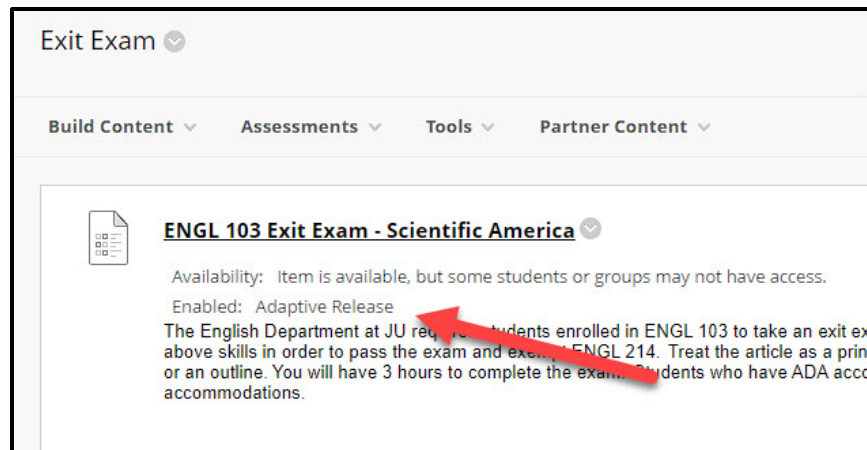
Next, you will affiliate the grade book with a column in the grade book if the survey is designed like a test/quiz with an attestation clause as mentioned before. This simply displays a checkmark when completed if points are not added to the grading criteria. The crucial step here is under the **Review Status** section you will need to select the item to be completed, in this case, the **Course Survey** before allowing access to the **Exit Exam** example. Choosing **Browse** opens the **Table of Contents** and allows you to select the assessment/assignment to be reviewed.



When you click on the survey it will populate in the **Select an Item** placeholder.



You will then click **OK** to set the review status to complete the **Adaptive Release**.



The **Availability** and **Enabled** under the title should display the Adaptive Release information. It is always wise to preview any adaptive release as a student to make sure it is functioning as intended.

Once the **Course Evaluation** has been completed, a green check mark will appear in the grade book notifying the instructor that it has been completed. No points were allocated to the survey, but the review feature was automatically turned on previously for notification purposes.

M***)	SAMPLE	IDENTIFY TOOLBAR ICONS IN ADOBE PHOTOSHOP	COURSE SURVEY
S			
IS	--	--	✓
N			

[Video – Setting up an Adaptive Release on a Course Evaluation](#)

[Video – Outcome of the Adaptive Release Once Implemented](#)