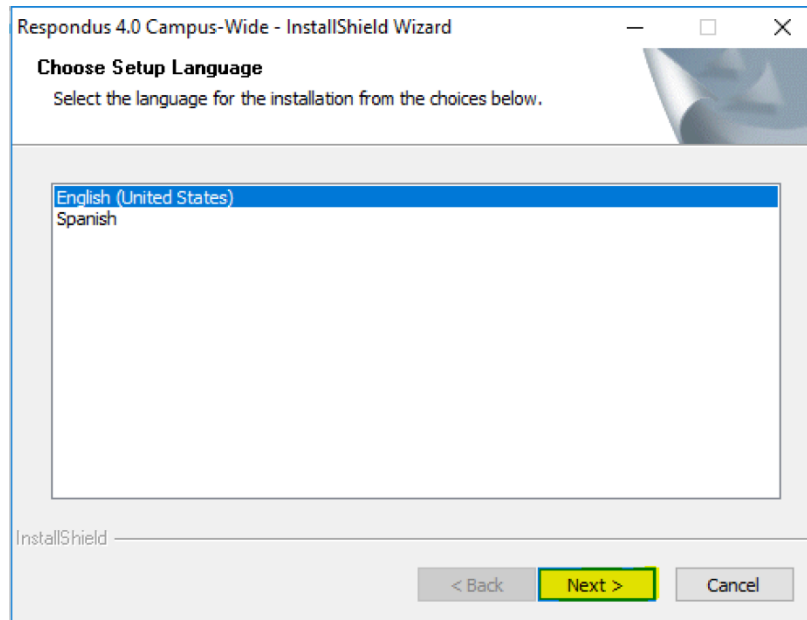
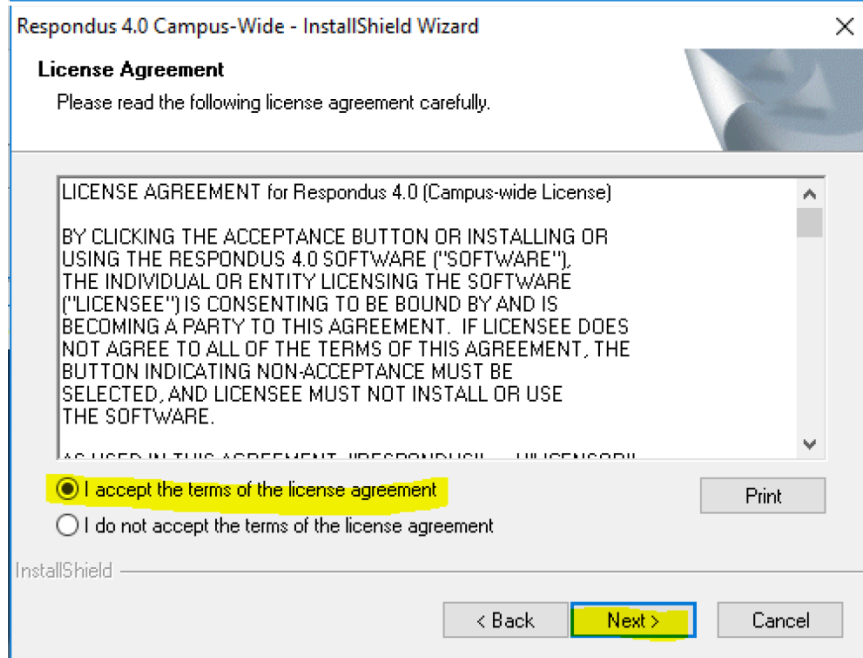
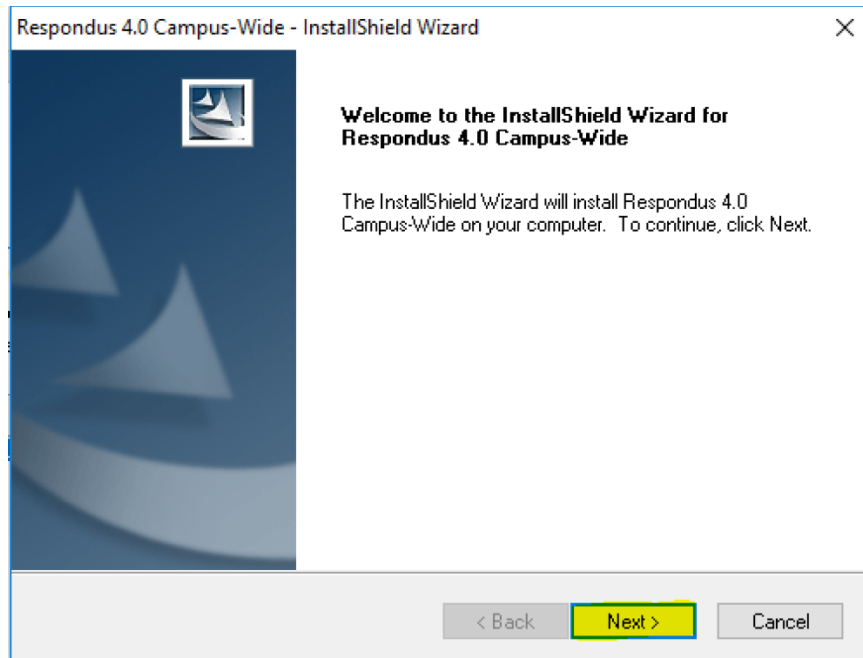


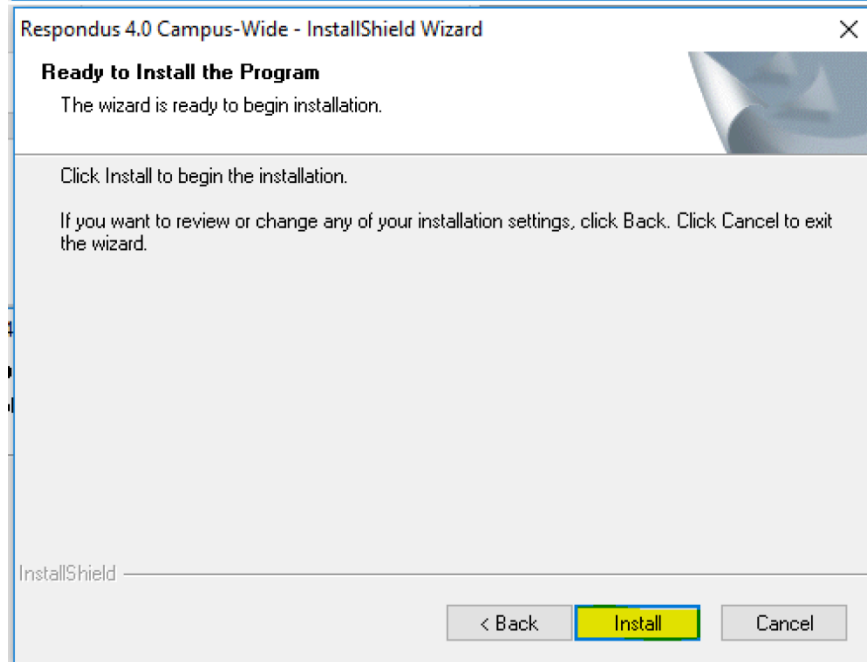
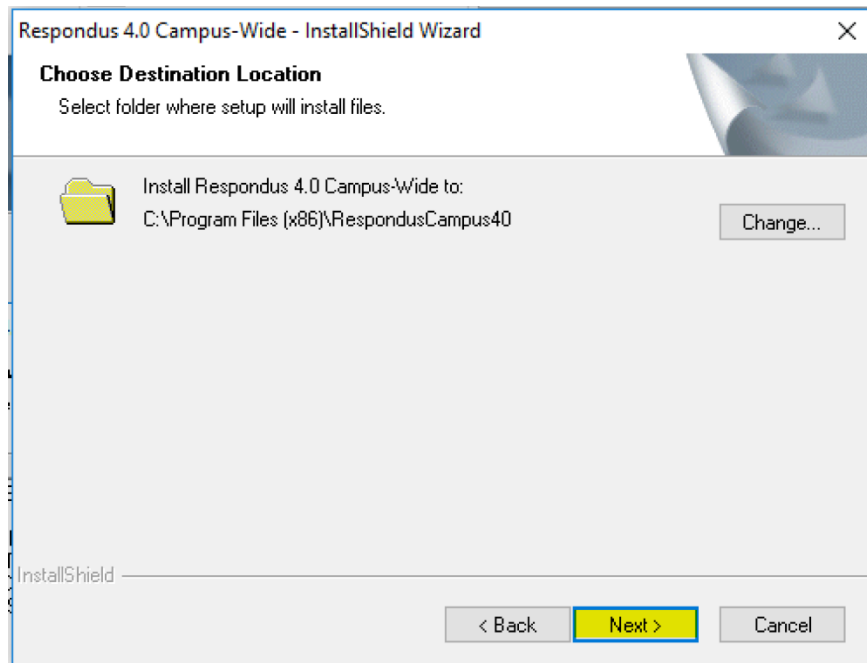


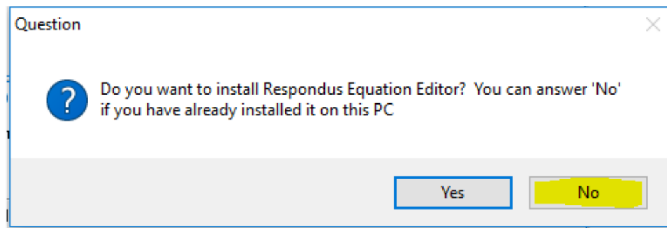
Installing Respondus 4.0 on a Workstation

* Software licensing passwords will only be distributed by Dee Thornton.

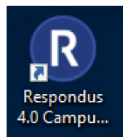
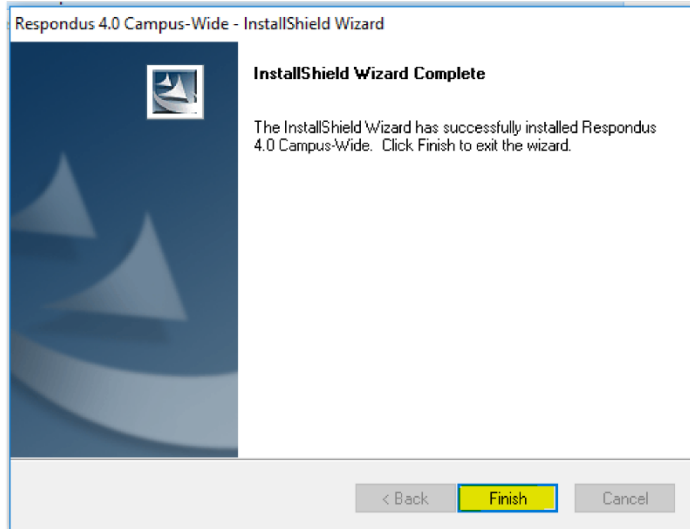








(unless needed)



Launch the Application from the desktop



Campus-wide License

Before you can use Respondus 4.0 you must enter your institution name and installation password. The password must be provided by your local support person and cannot be obtained directly from Respondus, Inc.

Institution Name - enter it exactly as shown on the password sheet or e-mail

Local Support Contact(s) - this can be viewed later by going to Help > About

Installation Password

*** You will substitute the information found on the first page here when asked for the license information.**



Respondus Newsletter [Close]

Respondus offers an online resource site that includes tips for using Respondus software, as well as information about updates and new features. Keep your Respondus software and skills current by following our site today!

[Follow news.respondus.com \(opens browser\)](https://news.respondus.com)

Choose LMS Personality [OK]

Please select the Learning Management System "Personality" to work in. You can change to a different personality from the Start menu.

Blackboard [v]