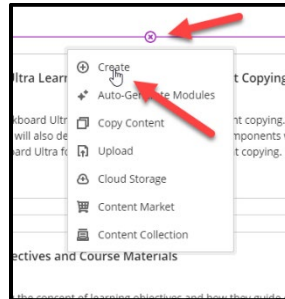


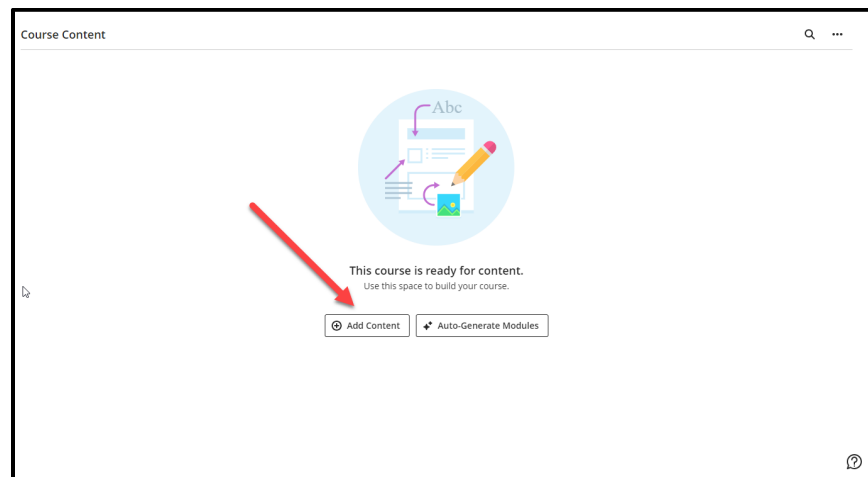


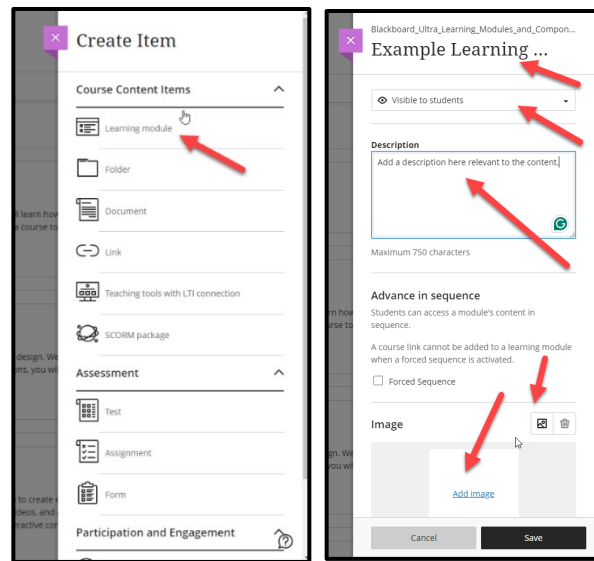
Creating a Learning Module

You can create learning modules within the **Course Content Menu** to serve as containers for your course content.

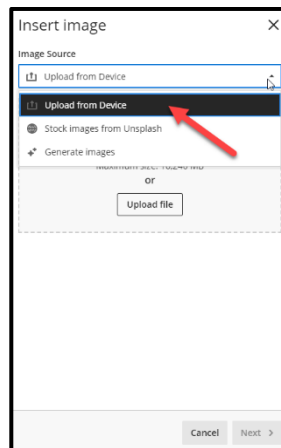


To create a **Learning Module**, you will point to the + (plus sign) above the course menu or if this is a new course with no content, you will select + (**Add Content**) located in the center of the **Content Menu** and select **Learning Module** from the drop-down list.

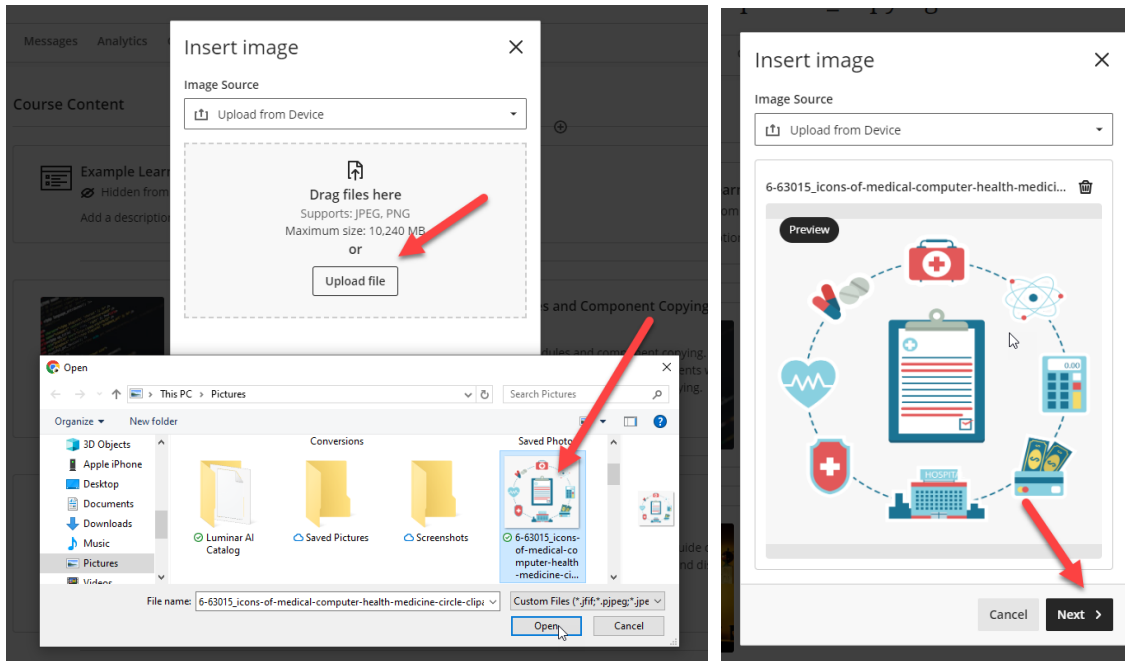




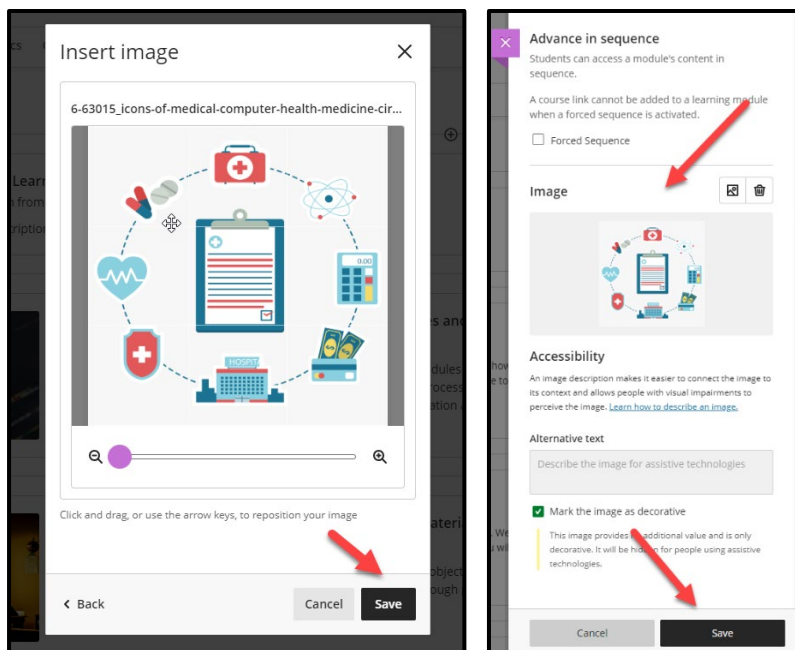
You will type a **Name** for the new content area title. In this case, **Example Learning Module** was used, but it is common to see instructors use **Week, Topic, or Subject** in their titles to help navigate their curriculum. These can be changed at any point. In the **Learning Module Panel**, you can add a description, which often includes directions or important information about the folder content, along with an image thumbnail that represents the folder contents.

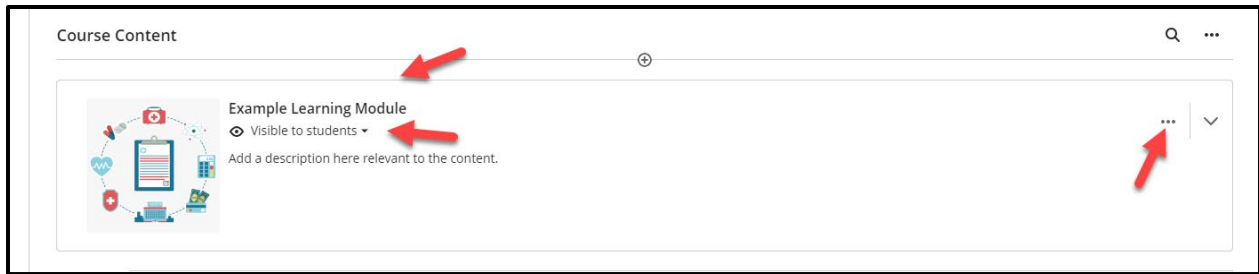


By choosing **Add Image**, you can select from a local image or stock image from Unsplash. The **AI-generated images** will be discussed in another guide.

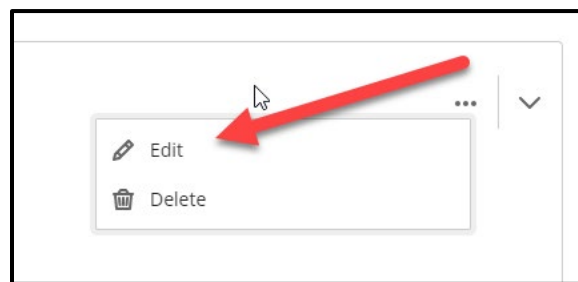


Choosing a local image requires a royalty-free image to be downloaded. These can be downloaded from **Pixabay** as an example. When you choose **Upload File**, the **Downloads** folder should open to access the image file. Make sure you are using .jpg or .png files. Click **Next** and then **Save** to add the image to the **Learning Module** thumbnail.

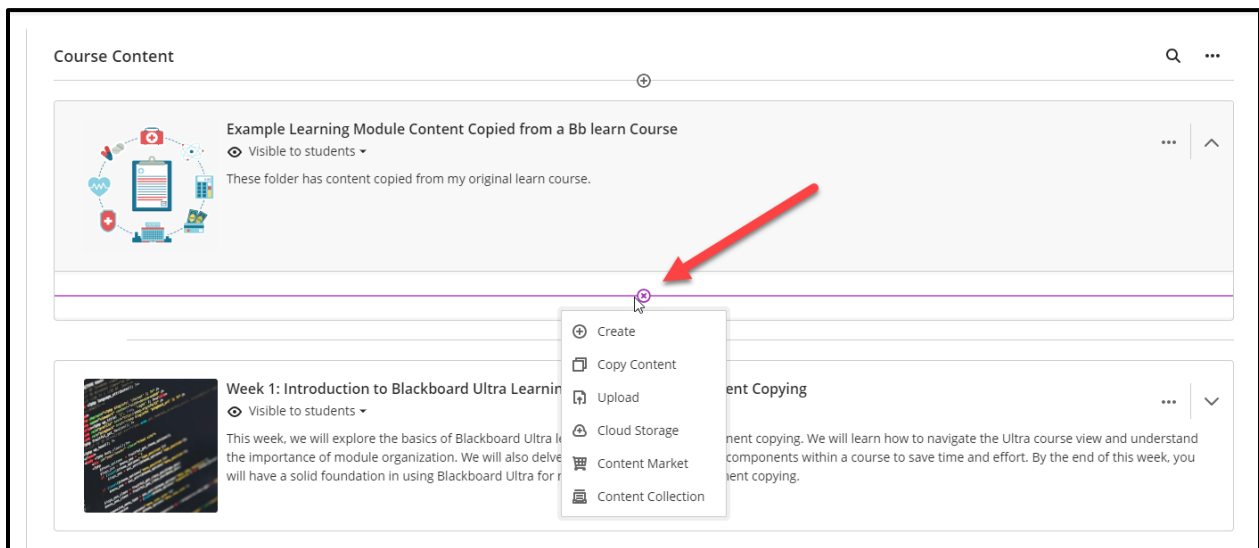




Once the **Save** has been clicked, the **Learning Module** will be added to the **Course Content**.



The three **Ellipses** on the right can be selected at any point to edit the title, description, thumbnail image, and visibility to the student.



From this point content can be created by clicking on the **Learning Module**, this allows the panel to lower displaying the + sign. By clicking + **Create**, you will be able to begin creating content to be placed inside of the **Learning Module**.