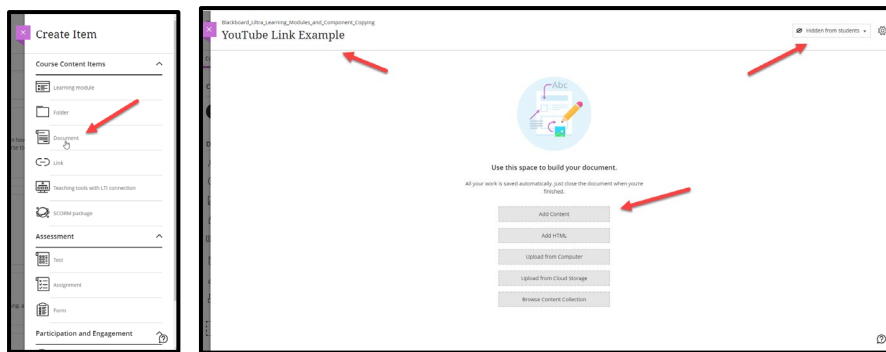




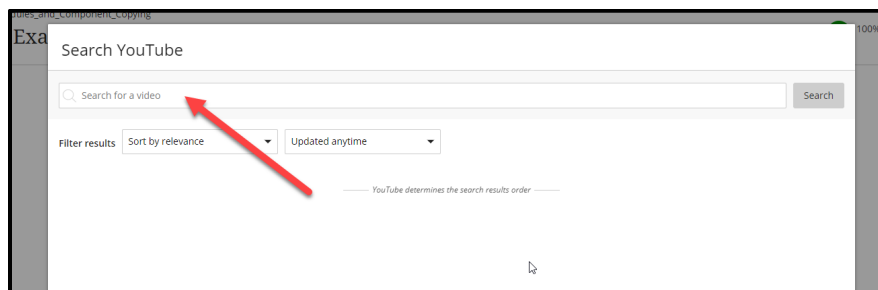
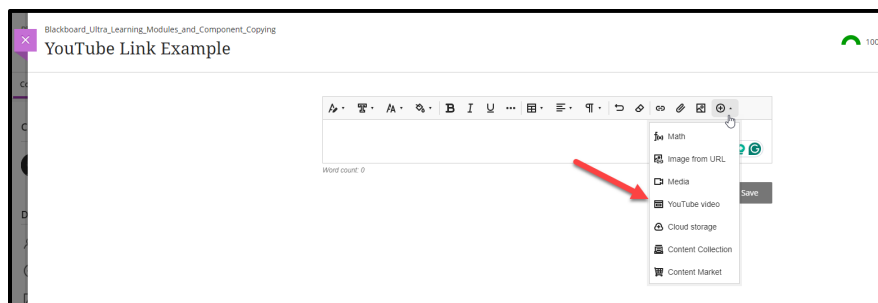
## Embedding a YouTube Video within a Content Folder

When embedding a YouTube video, it follows a similar set of instructions as if you are adding content to a content folder.

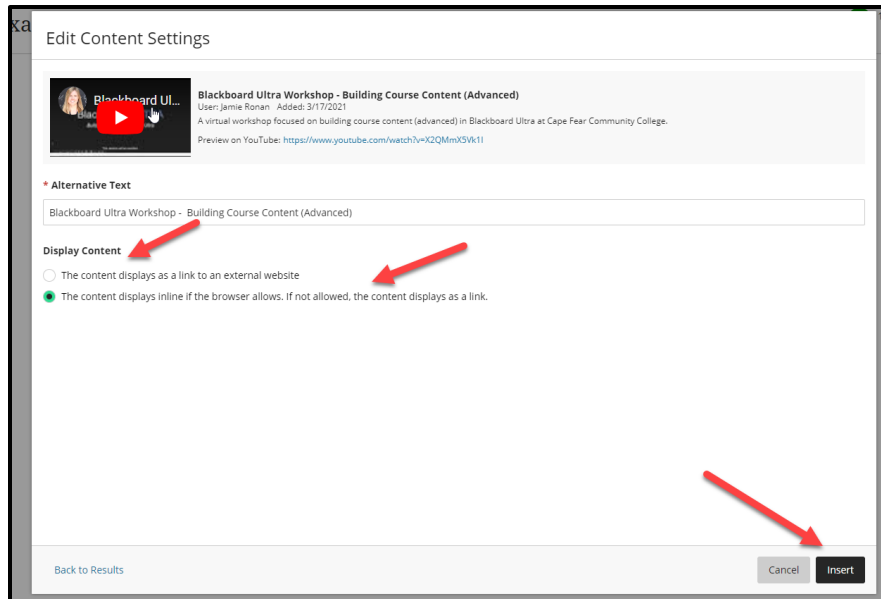
Initially a content folder will need to be created if one has not been already. Think of this as a container for documents and links. It is vital to stay organized when developing the class content hierarchy. Next you will click the + sign at the bottom of the newly created folder to access the content choices available. Here you will select **Create** and then choose **Document** under the **Course Content Items**.



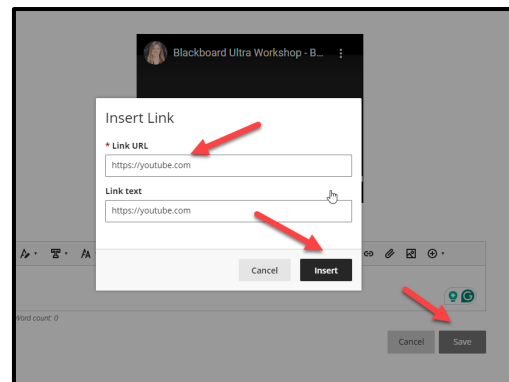
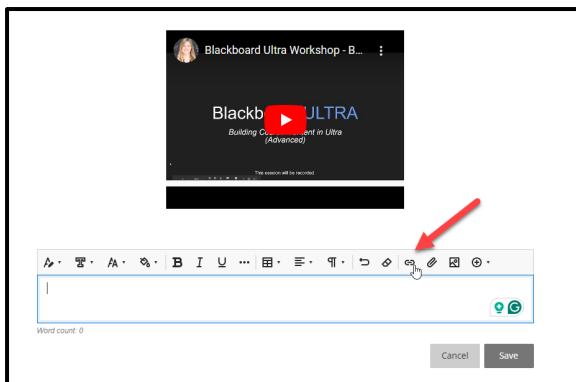
The new window will require a title for the content to be displayed. You will have multiple choices to add content. **Add Content** is the choice you will want to make. This opens the input window to add textual content. In the **Add Content** window you will select the plus sign at the far right and select **YouTube Video**. Here you search for the title and select the version to display live in a player window.



Here you will have the option to set the video as a live version directly installed as an embed or just a direct link.



The second option is to simply embed the link if you have the URL already. Using the same process as the previous instructions, you will now simply click on the link icon instead of the + icon. This will open the window to input the URL and title of the video.



You will click **Insert** and the display will be a live link clickable by the viewer. In the image below you will see both versions for reference.

